

PROYECTO: **PLAN PARCIAL EL ALMENDRON**
 SUELO DE EXPANSION CARMEN DE TONCHALA 2

CONTIENE: **PLANOS DE DIAGNOSTICO LEVANTAMIENTO TOPOGRAFICO**

ESCALA: **1:1 000**
 FECHA: **JUNIO DE 2024**

PLANO: **D01**
1 DE 14

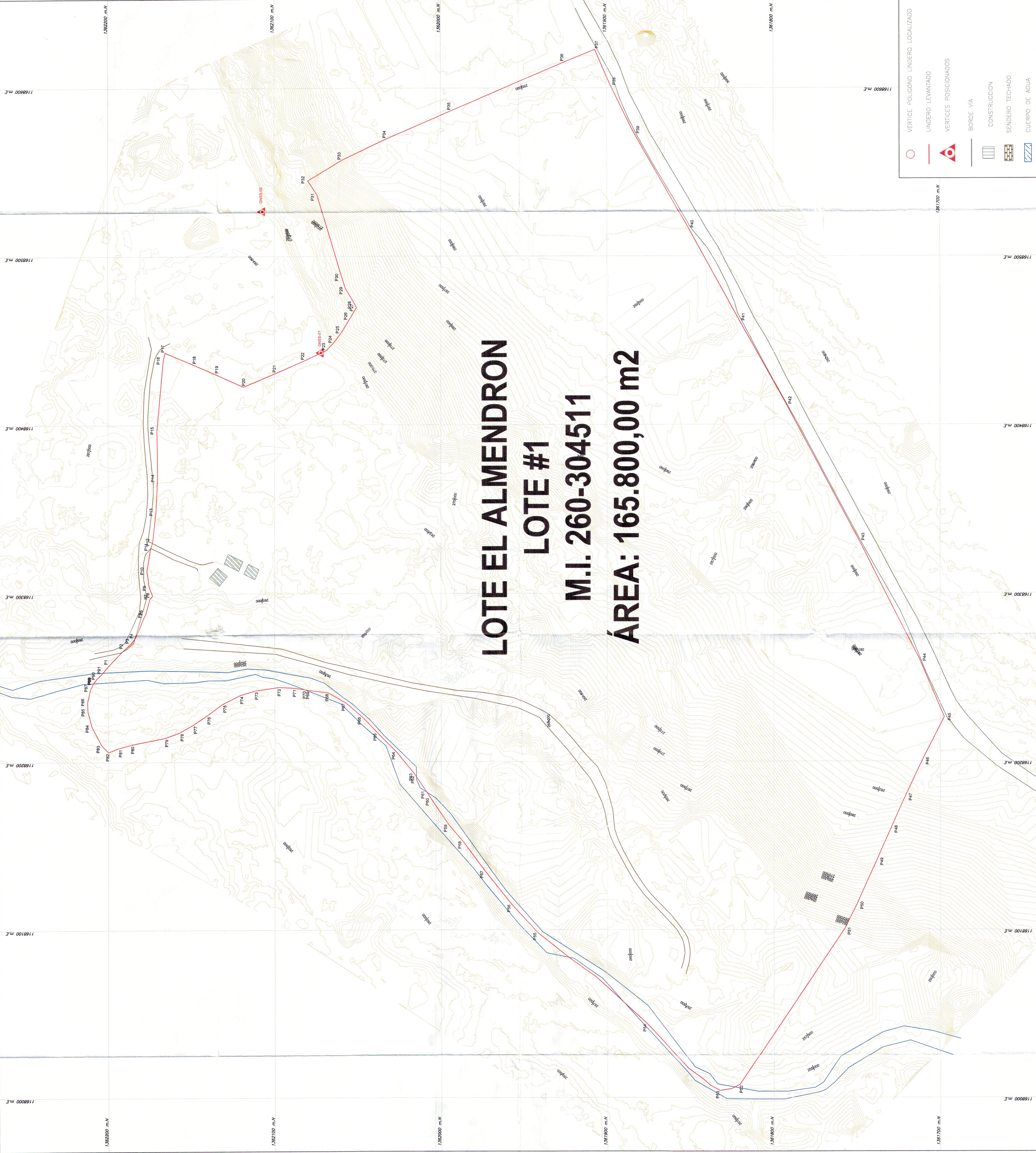
GESTOR DEL PLAN PARCIAL: **FUTURO 2022**

LEVANTAMIENTO: **EDUARDO RAMOS R.L. FUTURO 2022 S.A.S.**
TOP. MARIA MILAGROS DIAZ RIVERA
 Mat. 02-21882

OBSERVACIONES:
PLANO CATASTRAL: 8811UD3
RESOLUCION IGAC: 54-001-3417-2016
54-001-3316-2016

LOCALIZACION:

APROBACION



VERTICE	LADO	DIST.	ANGULO	ESTE	NORTE
P1	P1 - P2	12.812	176°48'23"	1168257.425	1362198.301
P2	P2 - P3	5.115	175°20'41"	1168266.560	1362190.338
P3	P3 - P4	4.781	192°48'23"	1168269.932	1362186.474
P4	P4 - P5	13.657	193°39'37"	1168273.769	1362183.647
P5	P5 - P6	1.988	175°41'10"	1168266.399	1362176.403
P6	P6 - P7	9.358	191°53'32"	1168288.172	1362177.504
P7	P7 - P8	2.391	153°27'52"	1168297.176	1362174.955
P8	P8 - P9	5.896	243°14'33"	1168268.943	1362173.345
P9	P9 - P10	9.427	167°16'47"	1168304.451	1362175.448
P10	P10 - P11	13.566	161°56'34"	1168313.786	1362176.763
P11	P11 - P12	3.123	170°28'54"	1168327.146	1362174.405
P12	P12 - P13	18.453	193°9'33"	1168330.089	1362173.362
P13	P13 - P14	20.275	183°35'15"	1168346.428	1362171.315
P14	P14 - P15	28.168	183°21'60"	1168366.679	1362170.332
P15	P15 - P16	41.454	174°12'37"	1168396.845	1362170.621
P16	P16 - P17	5.032	172°38'28"	1168438.128	1362166.862
P17	P17 - P18	17.785	79°42'25"	1168443.040	1362165.787
P18	P18 - P19	14.566	179°32'35"	1168436.129	1362149.369
P19	P19 - P20	18.999	179°7'41"	1168430.365	1362135.983
P20	P20 - P21	21.281	226°41'59"	1168422.582	1362116.681
P21	P21 - P22	18.627	180°45'29"	1168430.731	1362099.002
P22	P22 - P23	14.432	181°36'55"	1168438.091	1362081.891
P23	P23 - P24	6.541	201°49'41"	1168444.185	1362068.769
P24	P24 - P25	7.472	185°19'35"	1168448.927	1362064.315
P25	P25 - P26	6.602	186°16'38"	1168454.819	1362059.719
P26	P26 - P27	7.661	180°26'23"	1168462.989	1362054.675
P27	P27 - P28	3.448	240°30'16"	1168469.556	1362050.691
P28	P28 - P29	9.613	181°43'55"	1168472.564	1362052.376
P29	P29 - P30	7.936	166°48'12"	1168480.805	1362057.326
P30	P30 - P31	50.745	178°57'3"	1168488.361	1362059.751
P31	P31 - P32	9.933	196°44'44"	1168506.955	1362074.370
P32	P32 - P33	23.544	87°25'13"	1168545.239	1362079.851
P33	P33 - P34	29.795	174°16'21"	1168557.333	1362059.650
P34	P34 - P35	42.196	178°0'30"	1168570.011	1362032.687
P35	P35 - P36	73.782	179°38'10"	1168586.627	1361993.901
P36	P36 - P37	20.137	179°21'10"	1168615.250	1361925.897
P37	P37 - P38	22.036	91°30'15"	1168622.852	1361907.250
P38	P38 - P39	32.129	182°46'38"	1168602.672	1361896.389
P39	P39 - P40	65.002	183°30'25"	1168573.909	1361884.083
P40	P40 - P41	63.226	179°5'44"	1168517.597	1361851.613
P41	P41 - P42	56.668	180°24'57"	1168462.342	1361820.884
P42	P42 - P43	92.123	178°53'19"	1168412.869	1361792.665
P43	P43 - P44	80.849	178°44'43"	1168331.761	1361749.071
P44	P44 - P45	36.982	176°12'39"	1168259.985	1361712.294
P45	P45 - P46	27.906	129°13'53"	1168226.030	1361697.643
P46	P46 - P47	23.746	181°53'38"	1168201.261	1361710.497
P47	P47 - P48	21.037	181°13'56"	1168178.834	1361720.733
P48	P48 - P49	20.980	180°6'59"	1168160.661	1361728.391
P49	P49 - P50	26.652	179°32'5"	1168141.522	1361737.986
P50	P50 - P51	16.775	177°52'52"	1168115.482	1361749.937
P51	P51 - P52	112.093	172°34'20"	1168100.504	1361757.492
P52	P52 - P53	49.073	93°53'2"	1168007.792	1361820.484
P53	P53 - P54	39.554	177°21'32"	1168004.139	1361832.415
P54	P54 - P55	63.398	169°1'23"	1168043.853	1361876.872
P55	P55 - P56	22.695	177°9'38"	1168098.063	1361941.704
P56	P56 - P57	25.877	175°32'45"	1168114.600	1361957.248
P57	P57 - P58	21.983	178°16'26"	1168134.774	1361973.454
P58	P58 - P59	13.897	183°51'58"	1168152.328	1361986.705
P59	P59 - P60	16.885	173°53'60"	1168162.223	1361995.282
P60	P60 - P61	4.918	179°3'52"	1168177.729	1362006.064
P61	P61 - P62	10.887	180°0'0"	1168181.812	1362008.805
P62	P62 - P63	2.042	180°0'0"	1168190.851	1362014.874
P63	P63 - P64	16.695	185°27'42"	1168192.546	1362016.012
P64	P64 - P65	15.865	185°39'36"	1168205.456	1362026.596
P65	P65 - P66	13.618	179°18'3"	1168216.676	1362037.814
P66	P66 - P67	12.932	186°5'5"	1168226.422	1362047.325
P67	P67 - P68	12.235	189°30'0"	1168240.668	1362057.287
P68	P68 - P69	12.139	203°5'4"	1168240.806	1362067.871
P69	P69 - P70	2.001	177°53'43"	1168242.292	1362079.918
P70	P70 - P71	6.090	180°0'0"	1168242.610	1362081.894
P71	P71 - P72	9.692	185°53'14"	1168243.576	1362087.907
P72	P72 - P73	14.251	191°30'52"	1168244.125	1362097.583
P73	P73 - P74	9.711	188°11'34"	1168242.076	1362111.686
P74	P74 - P75	11.859	180°7'30"	1168238.353	1362120.999
P75	P75 - P76	11.857	189°4'13"	1168234.018	1362131.604
P76	P76 - P77	9.628	177°41'8"	1168227.048	1362141.319
P77	P77 - P78	8.717	175°42'50"	1168221.756	1362149.363
P78	P78 - P79	9.440	170°35'56"	1168217.523	1362156.983
P79	P79 - P80	20.714	171°32'28"	1168214.348	1362165.973
P80	P80 - P81	7.779	183°47'10"	1168210.326	1362186.193
P81	P81 - P82	6.664	185°28'7"	1168208.315	1362193.707
P82	P82 - P83	5.463	115°20'5"	1168205.987	1362198.951
P83	P83 - P84	12.974	162°27'10"	1168209.797	1362203.867
P84	P84 - P85	9.216	166°26'39"	1168211.227	1362210.005
P85	P85 - P86	5.322	166°51'29"	1168230.142	1362212.341
P86	P86 - P87	7.940	165°14'33"	1168235.452	1362212.484
P87	P87 - P88	3.848	167°44'27"	1168243.192	1362210.668
P88	P88 - P89	0.078	167°47'53"	1168246.666	1362208.013
P89	P89 - P90	3.424	179°59'60"	1168246.727	1362208.966
P90	P90 - P91	4.674	171°19'4"	1168248.437	1362206.973
P91	P91 - P1	6.345	185°18'39"	1168252.653	1362203.481

Area: 165.800,00 m²
 Area: 16,58 ha
 Perimetro: 1847,554 ml

LEVANTAMIENTO TOPOGRAFICO
 ESCALA 1:1.000